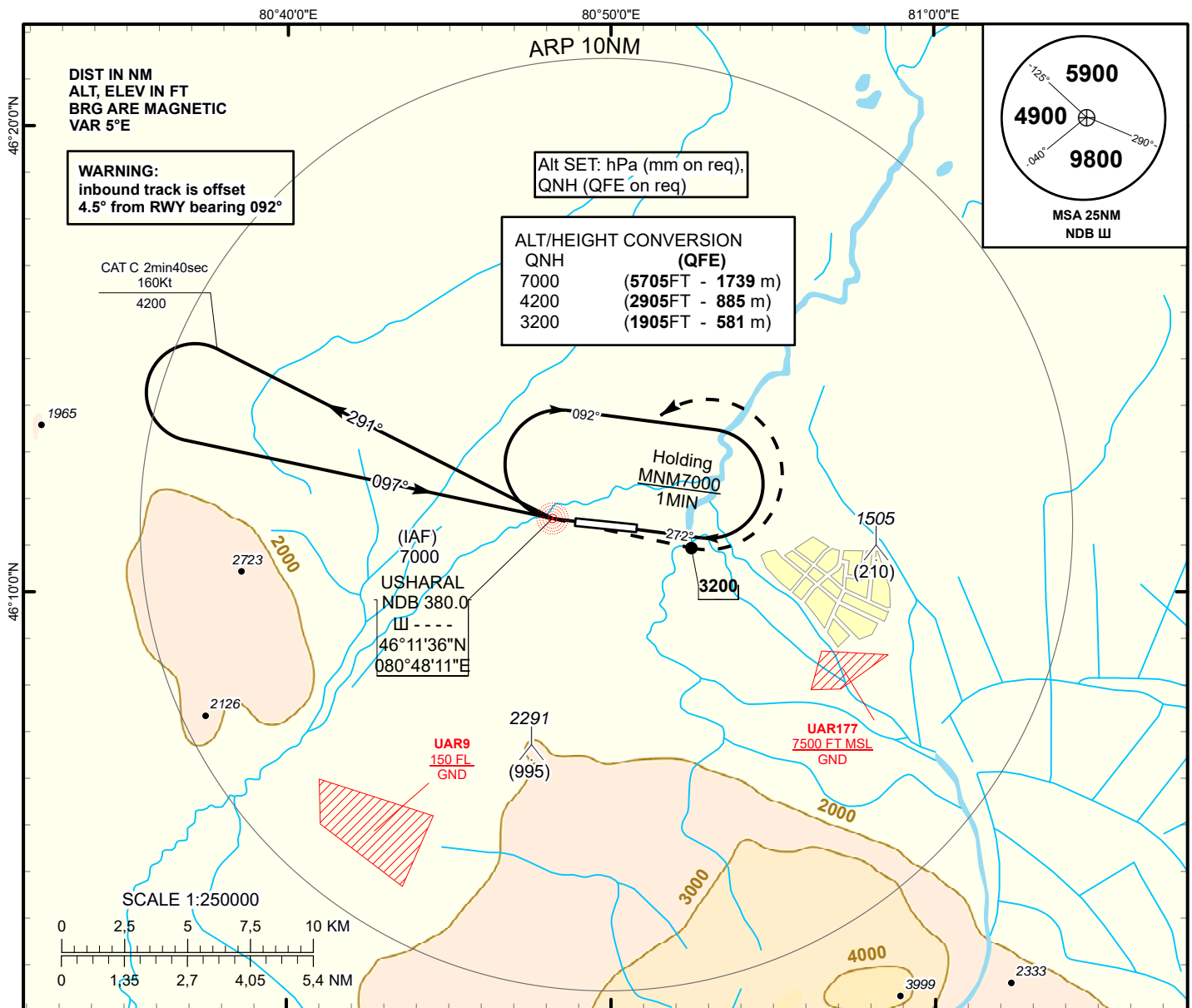


**INSTRUMENT APPROACH
CHART**

AERODROME ELEV **1295ft**
THR RWY 09 - ELEV **1295ft**
HEIGHTS RELATED TO AD ELEV

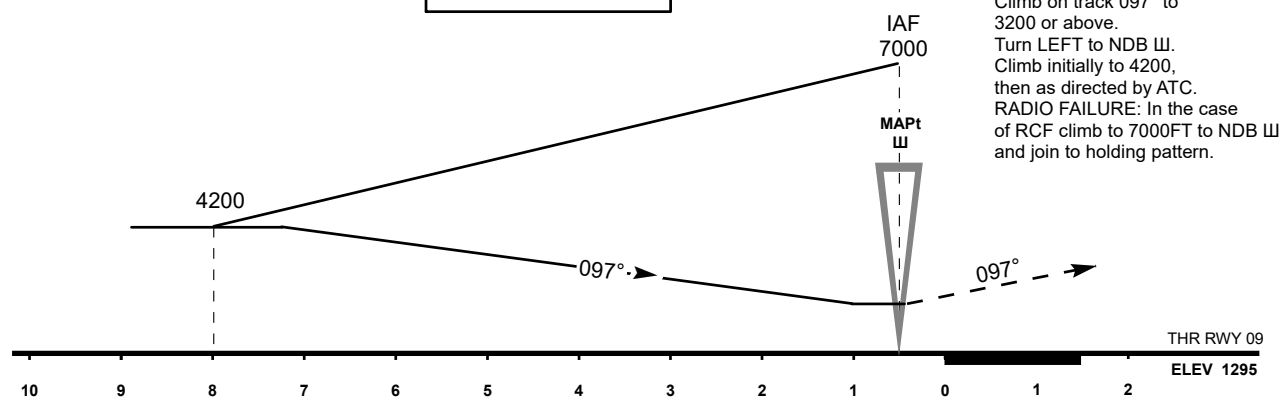
USHARAL TOWER 118.1

**USHARAL
NDB Z
RWY 09**



**TRANSITION ALT
10000 FT**

MISSED APPROACH
Climb on track 097° to 3200 or above.
Turn LEFT to NDB W.
Climb initially to 4200, then as directed by ATC.
RADIO FAILURE: In the case of RCF climb to 7000FT to NDB W and join to holding pattern.



CHANGE: UAR6 del.

Aircraft Category					C
Straight-in Approach OCA/H	NDB				2880(1590)
Aerodrome Operating Minima MDH ft x RVR(CMV)	NDB				

USHARAL (UAAL)
NDB Z RWY09

AERONAUTICAL DATA TABULATION

NDB approach to RWY09 from NDB Ш.	
Fix/point	Coordinates
Ш LMM NDB	46°11'35.8" N 080°48'11.3" E
THR RWY 09	46°11'32.67"N 080°48'44.77"E