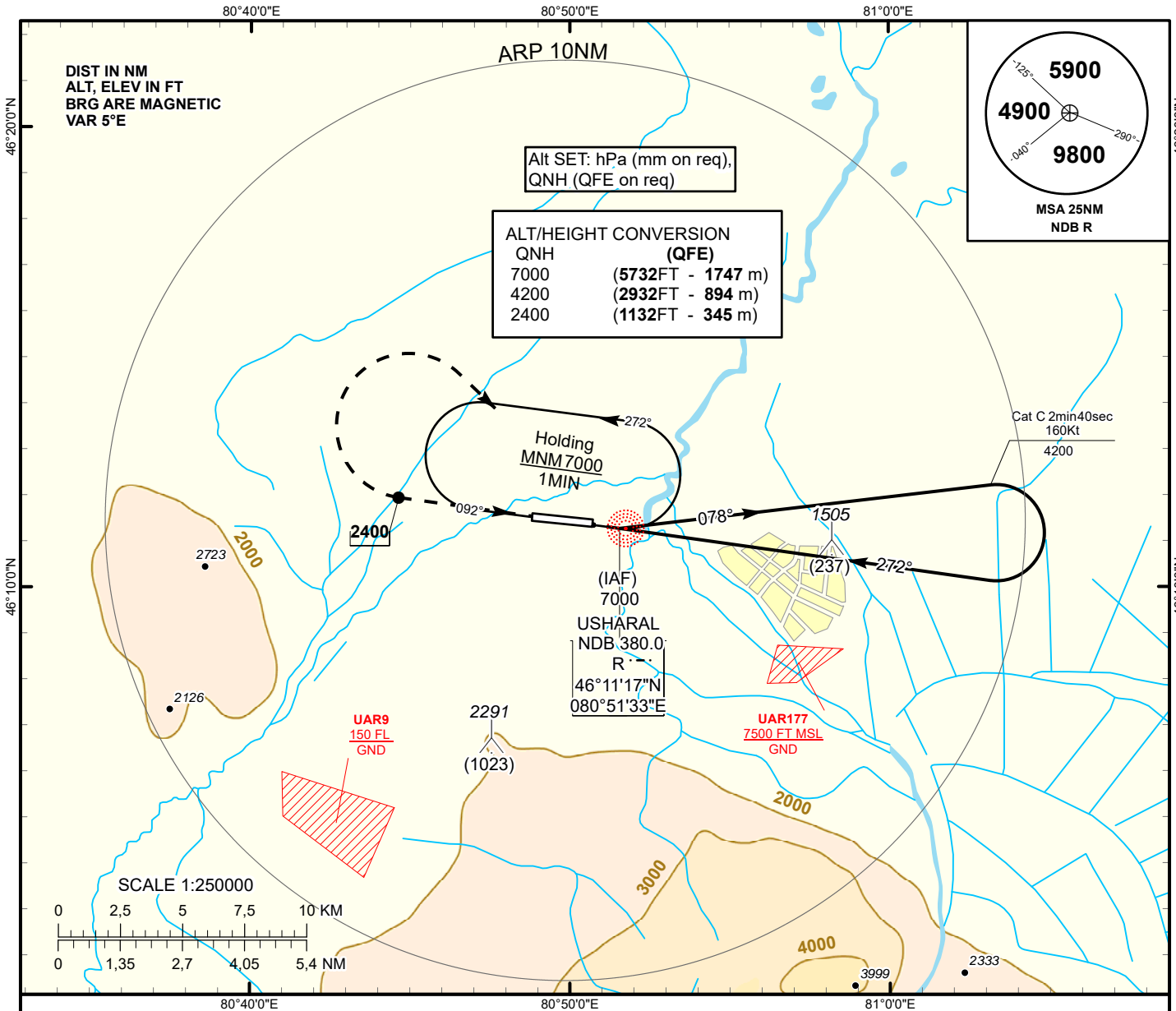


**INSTRUMENT APPROACH
CHART
ICAO**

AERODROME ELEV **1295ft**
HEIGHTS RELATED TO
THR RWY 27 - ELEV **1268ft**

USHARAL TOWER 118.1

**USHARAL
NDB Z
RWY 27**

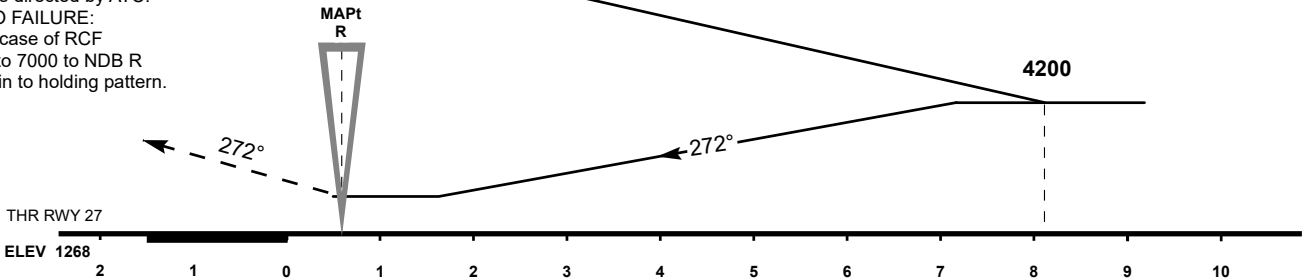


MISSED APPROACH

Climb on track 272° to 2400 or above.
Turn RIGHT to NDB R.
Climb initially to 4200, then as directed by ATC.
RADIO FAILURE:
In the case of RCF climb to 7000 to NDB R and join to holding pattern.

IAF 7000

TRANSITION ALT 10000



CHANGE: UAR6 del.

Aircraft Category					C
Straight-in Approach OCA/H	NDB				1800(540)
Aerodrome Operating Minima MDH ft x RVR(CMV)	NDB				

USHARAL (UAAL)
NDB Z RWY27

AERONAUTICAL DATA TABULATION

NDB approach to RWY27 from NDB R.	
Fix/point	Coordinates
R LMM NDB	46°11'17.2" N 080°51'33.3" E
THR RWY 27	46°11'21.21"N 080°50'49.65"E