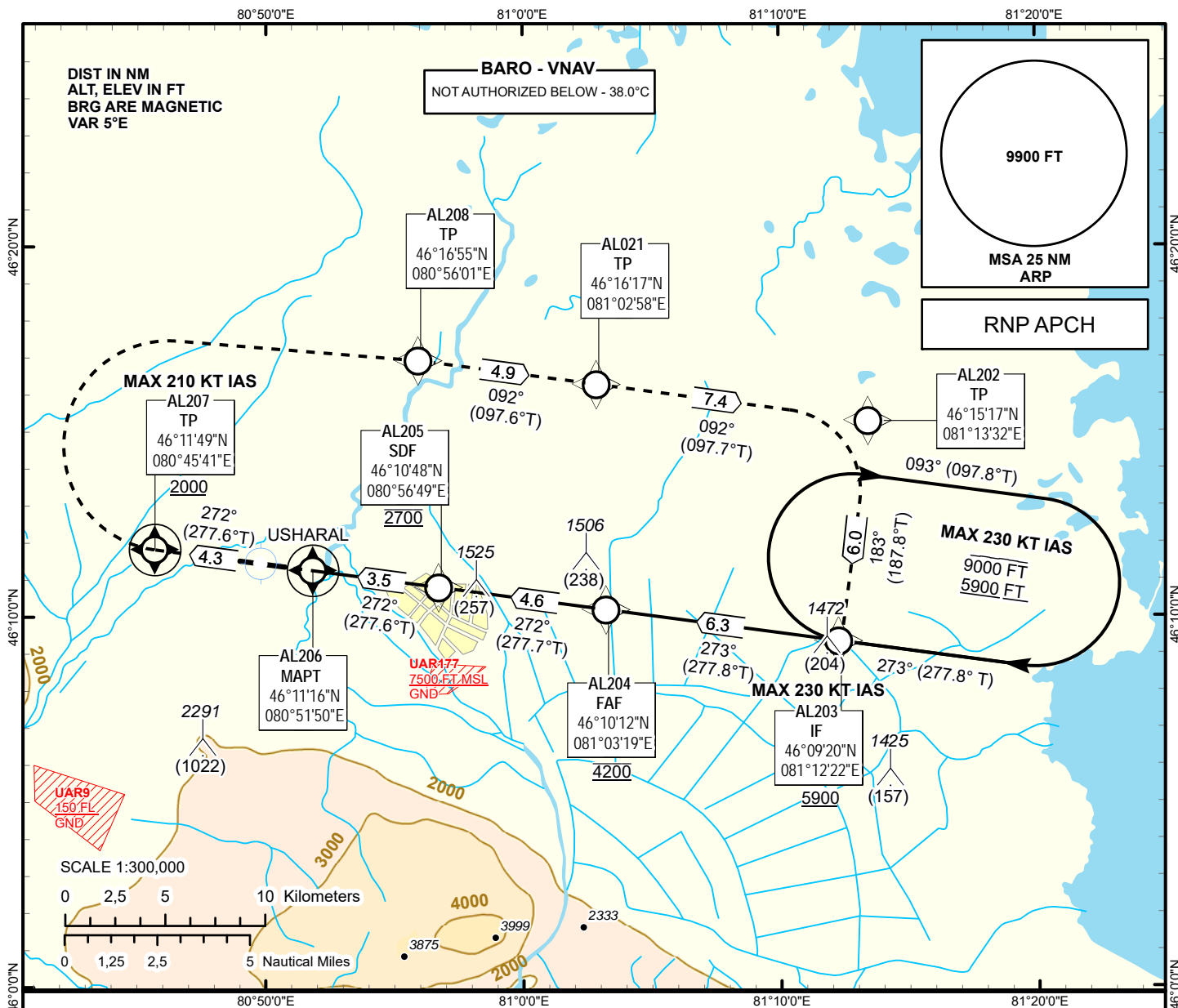


INSTRUMENT  
APPROACH  
CHART - ICAO

AERODROME ELEV **1295 FT**  
HEIGHTS RELATED TO  
THR RWY 27 - ELEV **1268 FT**

USHARAL TOWER 118.1

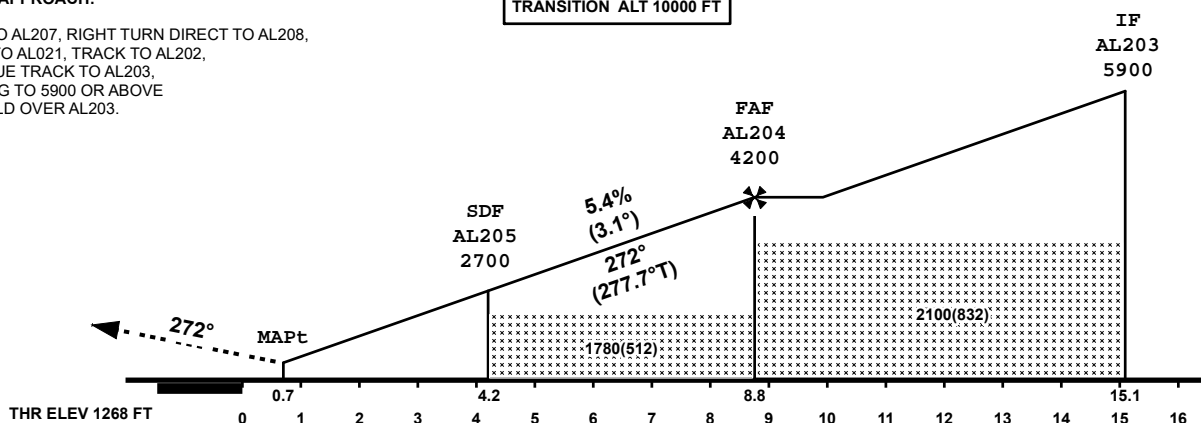
USHARAL  
RNP RWY 27



**MISSED APPROACH:**

CLIMB TO AL207, RIGHT TURN DIRECT TO AL208,  
TRACK TO AL021, TRACK TO AL202,  
CONTINUE TRACK TO AL203,  
CLIMBING TO 5900 OR ABOVE  
AND HOLD OVER AL203.

TRANSITION ALT 10000 FT



OCA (OCH)		A	B	C	D
Straight	LNAV	1570 (302)			
	LNAV/VNAV	1470 (202)	1480(212)	1500 (232)	1510 (242)

CHANGE: New chart.

**TABULAR DESCRIPTION**

IAP RWY 27									
Serial Number	Path Desc.	Waypoint Identifier	Fly - over	Course °M(°T)	Dist (nm)	Turn Dir	Altitude FT	Speed KT	VPA (°)
010	IF	AL203	-				+5900	-230	
020	TF	AL204	-	273(277.8)	6.3		@4200		
030	TF	AL205	-	272(277.7)	4.6		@2700		-3.1
040	TF	AL206	+	272(277.6)	3.5		@1549		-3.1
050	CF	AL207	+	272(277.6)	4.3		+2000	-210	+1.4
060	DF	AL208	-	-	-	R	-		+1.4
070	TF	AL021	-	092(097.6)	4.9		-		+1.4
080	TF	AL202	-	092(097.7)	7.4		-		+1.4
090	TF	AL203	-	183(187.8)	6.0		+5900		+1.4
100	HM	AL203	-	273(277.8)	5.0	R	+5900		

**WAYPOINT LIST**

IAP RWY 27		
Waypoint identifier	Coordinates	
AL203	460920.29N	0811221.57E
AL204	461011.56N	0810319.19E
AL205	461047.98N	0805649.13E
AL206	461115.69N	0805149.58E
AL207	461149.44N	0804541.38E
AL208	461655.48N	0805601.48E
AL021	461616.71N	0810257.9°E
AL202	461516.8N	0811332.01E