

STANDARD DEPARTURE  
CHART - INSTRUMENT  
(SID) - ICAO

USHARAL TOWER 118.1

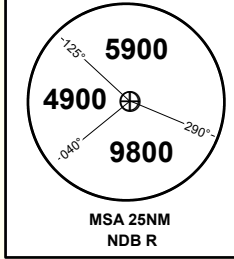
TRANSITION ALTITUDE  
10000 FT

AGAKA 3B,  
NESUN 1B

USHARAL  
RWY 27

DIST IN NM  
ALT, ELEV IN FT  
BRG ARE MAGNETIC  
VAR 5°E

ALT/HEIGHT CONVERSION  
QNH (QFE)  
2000 (732ft - 223 m)



**WARNING:**  
1. AGAKA 3B min. PDG 6%  
2. NESUN 1B min. PDG 7.5%

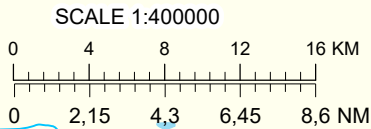
**AGAKA 3B**  
After take-off climb straight ahead to 2000 or above, turn RIGHT on track 040° until intercept bearing 180° R, then proceed on track 000° to AGAKA (N463544 E0805503).

**NESUN 1B**  
After take-off climb straight ahead to 2000 or above, turn LEFT on track 212° until intercept bearing 062° R, then proceed on track 242° to NESUN (N460123 E0801738).

**AGAKA**  
46°35'44"N  
080°55'03"E  
FL120-FL140

**USHARAL**  
NDB 380.0  
R  
46°11'17"N  
080°51'33"E

**NESUN**  
46°01'23"N  
080°17'38"E  
FL120-FL140



Change: ALT/HEIGHT CONVERSION tab., TWR freq.

THIS PAGE INTENTIONALLY LEFT BLANK