

STANDARD ARRIVAL  
CHART - INSTRUMENT  
(STAR)

TRANSITION ALTITUDE  
10000 FT

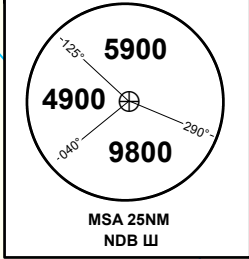
USHARAL TOWER 118.1

AGAKA 2C,  
NESUN 2C

USHARAL  
RWY 09

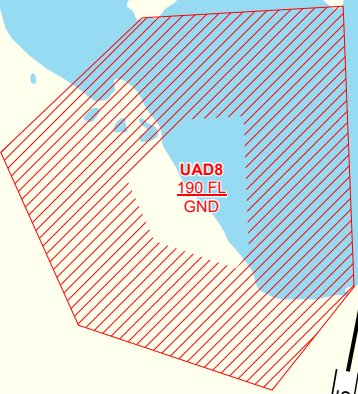
DIST IN NM  
ALT, ELEV IN FT  
BRG ARE MAGNETIC  
VAR 5°E

ALT/HEIGHT CONVERSION  
QNH (QFE)  
7000 (5705ft - 1739 m)



**AGAKA 2C**  
After crossing AGAKA (N463544 E0805503)  
proceed on track 186° to NDB W.  
Cross W at 7000FT

**NESUN 2C**  
After crossing NESUN (N460123 E0801738)  
proceed on track 059° to NDB W.  
Cross W at 7000FT



**AGAKA**  
46°35'44" N  
080°55'03" E  
FL120-FL140

(IAF)  
7000

**USHARAL**  
NDB 380.0  
W - - -  
46°11'36"N  
080°48'11"E

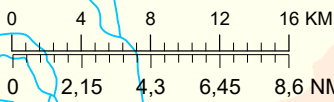


**UAR177**  
7500 FT MSL  
GND

**UAR9**  
150 FT  
GND

**NESUN**  
46°01'23" N  
080°17'38" E  
FL120-FL140

SCALE 1:400000



Change: ALT/HEIGHT CONVERSION tab., TWR freq.

THIS PAGE INTENTIONALLY LEFT BLANK