

STANDARD ARRIVAL
CHART - INSTRUMENT
(STAR) - ICAO

TRANSITION ALTITUDE
10000 FT

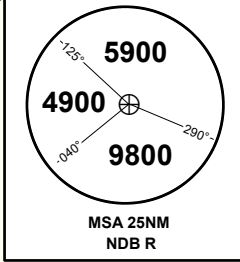
USHARAL TOWER 118.1

AGAKA 2D,
NESUN 2D

USHARAL
RWY 27

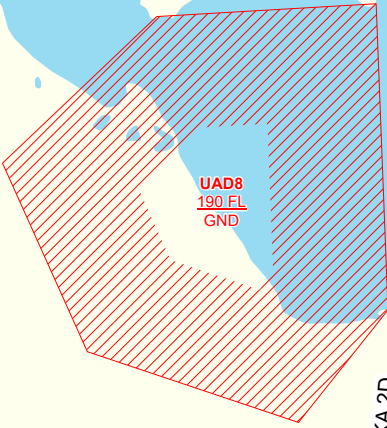
DIST IN NM
ALT, ELEV IN FT
BRG ARE MAGNETIC
VAR 5°E

ALT/HEIGHT CONVERSION
QNH (QFE)
7000 (5732ft - 1747 m)



AGAKA 2D
After crossing AGAKA (N463544 E0805503)
proceed on track 180° to NDB R.
Cross R at 7000FT

NESUN 2D
After crossing NESUN (N460123 E0801738)
proceed on track 062° to NDB R.
Cross R at 7000FT



AGAKA
46°35'44" N
080°55'03" E
FL120-FL140

(IAF)
7000
USHARAL
NDB 380.0
R
46°11'17"N
080°51'33"E

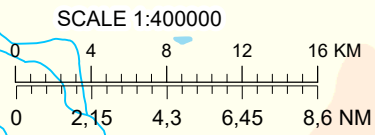


NESUN
46°01'23" N
080°17'38" E
FL120-FL140

NESUN 2D
26

UAR177
7500 FT MSL
GND

UAR9
150 FL
GND



Change: ALT/HEIGHT CONVERSION tab., TWR freq.

THIS PAGE INTENTIONALLY LEFT BLANK