

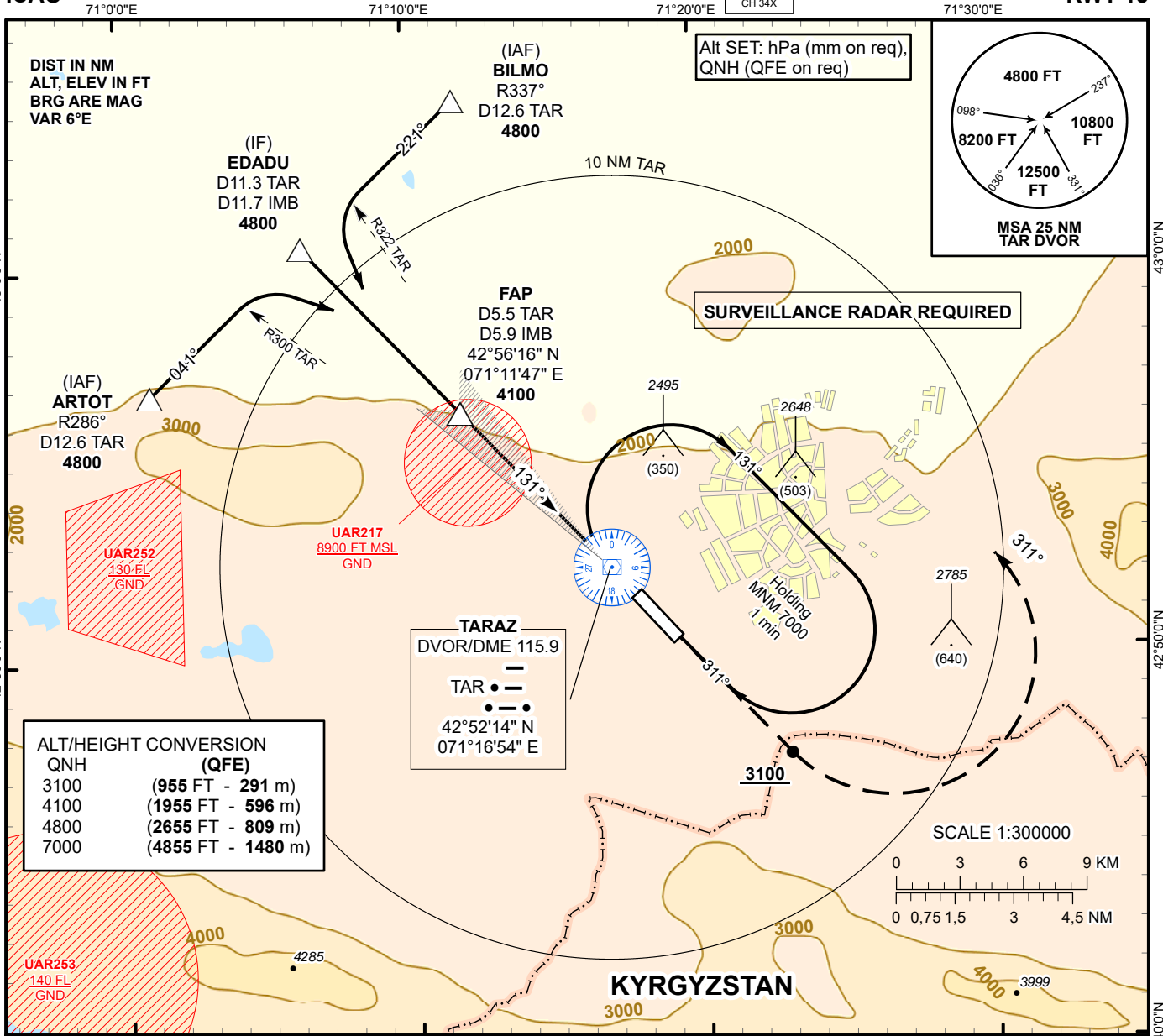
**INSTRUMENT APPROACH
CHART
ICAO**

AERODROME ELEV **2190 FT**
HEIGHTS RELATED TO
THR RWY 13 - ELEV **2145 FT**

ILS
LLZ 109.7
IMB
GP 333.2
CH 34X

TOWER 122.1

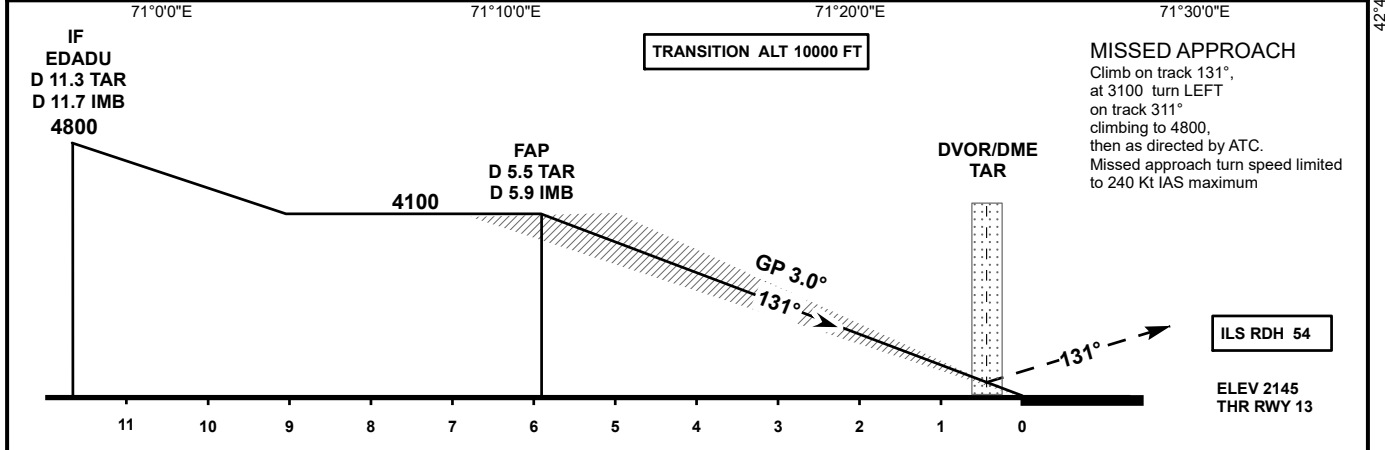
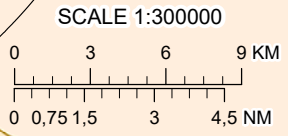
**TARAZ
ILS/DME
RWY 13**



ALT/HEIGHT CONVERSION (QFE)

QNH	(QFE)
3100	(955 FT - 291 m)
4100	(1955 FT - 596 m)
4800	(2655 FT - 809 m)
7000	(4855 FT - 1480 m)

TARAZ
DVOR/DME 115.9
TAR
42°52'14" N
071°16'54" E



MISSED APPROACH
Climb on track 131°,
at 3100 turn LEFT
on track 311°
climbing to 4800,
then as directed by ATC.
Missed approach turn speed limited
to 240 Kt IAS maximum

ILS RDH 54
ELEV 2145
THR RWY 13

Aircraft Category		A	B	C	D	DIST to THR DME IMB	DME IMB ZERO RANGED TO THR RWY 13						
							NM	5.9	5.0	4.0	3.0	2.0	1.0
Straight-in Approach OCA/H						DME TAR	NM	5.5	4.6	3.6	2.6	1.6	0.6
	CAT I	2345(200)	2345(200)	2345(200)	2345(200)	ALTITUDE	FT	4100	3813	3486	3162	2839	2518
						HEIGHT	FT	1955	1668	1341	1017	694	373
Aerodrome Operating Minima DH ft x RVR(CMV)	CAT I					GS	Kt	80	100	120	140	160	180
						Desc.Rate(5.2%)	ft/min	420	530	640	740	850	960

Change: UAD34 del.

TARAZ (UADD)
ILS/DME RWY13

AERONAUTICAL DATA TABULATION

ILS approach to RWY13 from TAR DVOR/DME, BILMO, ARTOT, EDADU	
Fix/point	Coordinates
TAR DVOR/DME	42° 52' 14.0"N 071° 16' 54.1"E
BILMO R337°, D12.6 TAR (IAF)	43° 04' 14.1"N 071° 11' 42.7"E
ARTOT R286°, D12.6 TAR (IAF)	42° 56' 49.6"N 071° 01' 00.0"E
EDADU D11.7 IMB, D11.3 TAR (IF)	43° 00' 31.6"N 071° 06' 20.7"E
D5.9 IMB, D5.5 TAR (FAP)	42° 56' 15.7"N 071° 11' 47.0"E
THR RWY13	42° 51' 57.40"N 071° 17' 15.14"E
IMB LLZ	42° 50' 23.9"N 071° 19' 13.7"E