

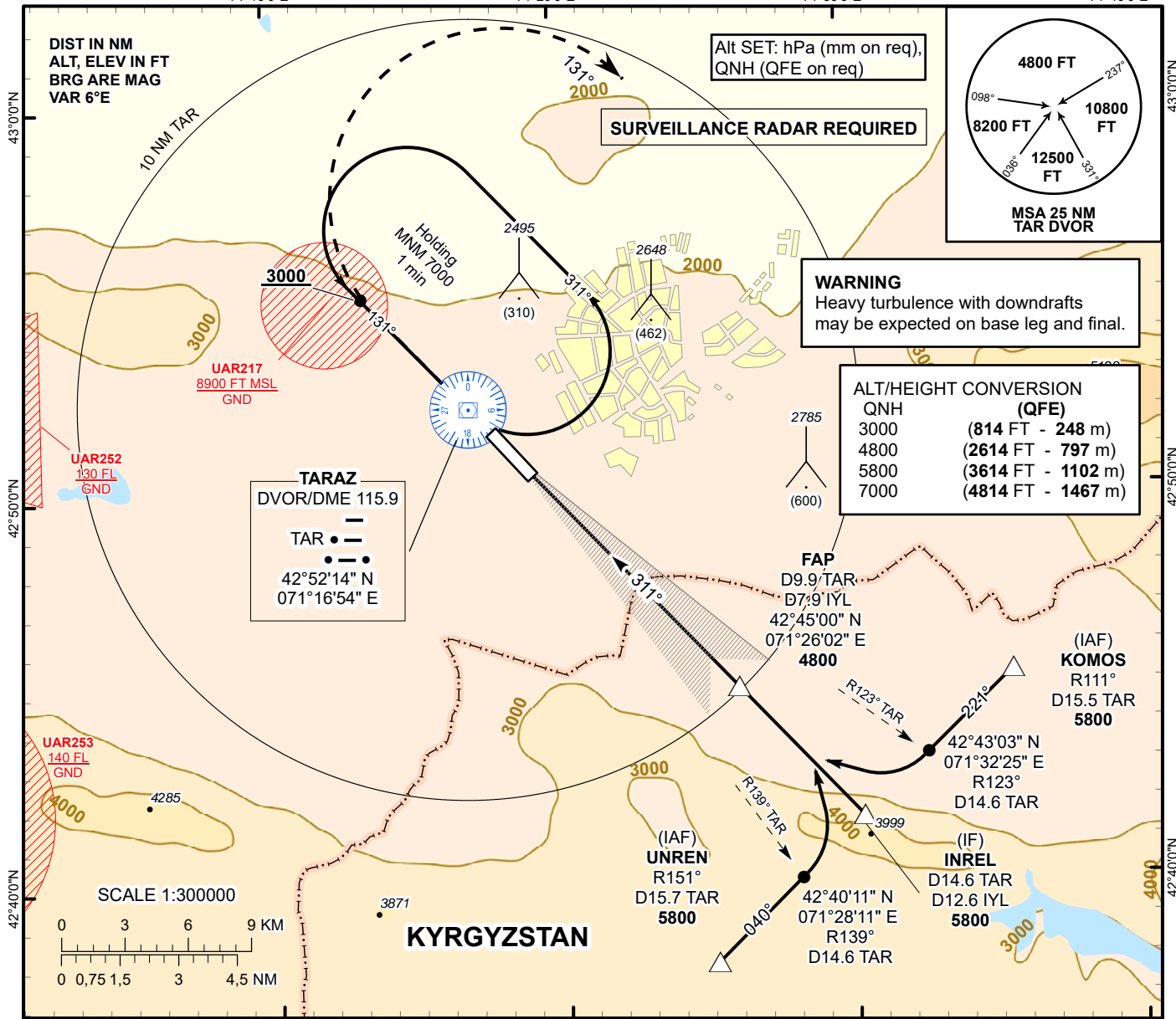
**INSTRUMENT APPROACH
CHART
ICAO**

AERODROME ELEV 2190 FT
HEIGHTS RELATED TO
THR RWY 31 - ELEV 2186 FT

ILS
LLZ 111.3
IYL ---
GP 332.3
CH 50X

TOWER 122.1

TARAZ
ILS/DME
RWY 31
71°40'0"E



MISSED APPROACH
Climb on track 311°, at 3000 turn RIGHT
on track 131° climbing to 5800,
then as directed by ATC.
Missed approach turn speed limited
to 240 Kt IAS maximum

TRANSITION ALT 10000 FT

DVOR/DME
TAR

ILS RDH 49

ELEV 2186
DTHR RWY 31

FAP
D 9.9 TAR
D 7.9 IYL

4800

IF
INREL
D 14.6 TAR
D 12.6 IYL
5800

Aircraft Category	A	B	C	D	DIST to DTHR DME IYL	NM	1.0	2.0	3.0	4.0	5.0	6.0	7.0	7.9
Straight-in Approach OCA/H					DME TAR	NM	3.0	4.0	5.0	6.0	7.0	8.0	9.0	9.9
	CAT I	2386(200)	2386(200)	2392(206)	2402(216)	ALTITUDE	FT	2554	2875	3198	3522	3849	4177	4508
					HEIGHT	FT	368	689	1012	1336	1663	1991	2321	2614

DME IYL ZERO RANGED TO THR RWY 31

Aerodrome
Operating Minima
DH ft x RVR(CMV)

CAT I														
					GS	Kt	80	100	120	140	160	180		
					Desc.Rate(5.2%)	ft/min	420	530	640	740	850	960		

CHANGE: Editorial.

TARAZ (UADD)
ILS/DME RWY31

AERONAUTICAL DATA TABULATION

ILS approach to RWY31 from TAR DVOR/DME, KOMOS, UMZIM, INREL	
Fix/point	Coordinates
TAR DVOR/DME	42° 52' 14.0"N 071° 16' 54.1"E
KOMOS R111°, D15.5 TAR (IAF)	42° 45' 16.7"N 071° 35' 37.0"E
UNREN R151°, D15.7 TAR (IAF)	42° 37' 55.3"N 071° 25' 02.0"E
INREL D12.6 IYL, D14.6 TAR (IF)	42° 41' 36.1"N 071° 30' 19.2"E
D7.9 IYL, D9.9 TAR (FAP)	42° 45' 00.5"N 071° 26' 02.1"E
DTHR RWY31	42° 50' 44.41"N 071° 18' 47.68"E
IYL LLZ	42° 52' 09.5"N 071° 16' 59.8"E