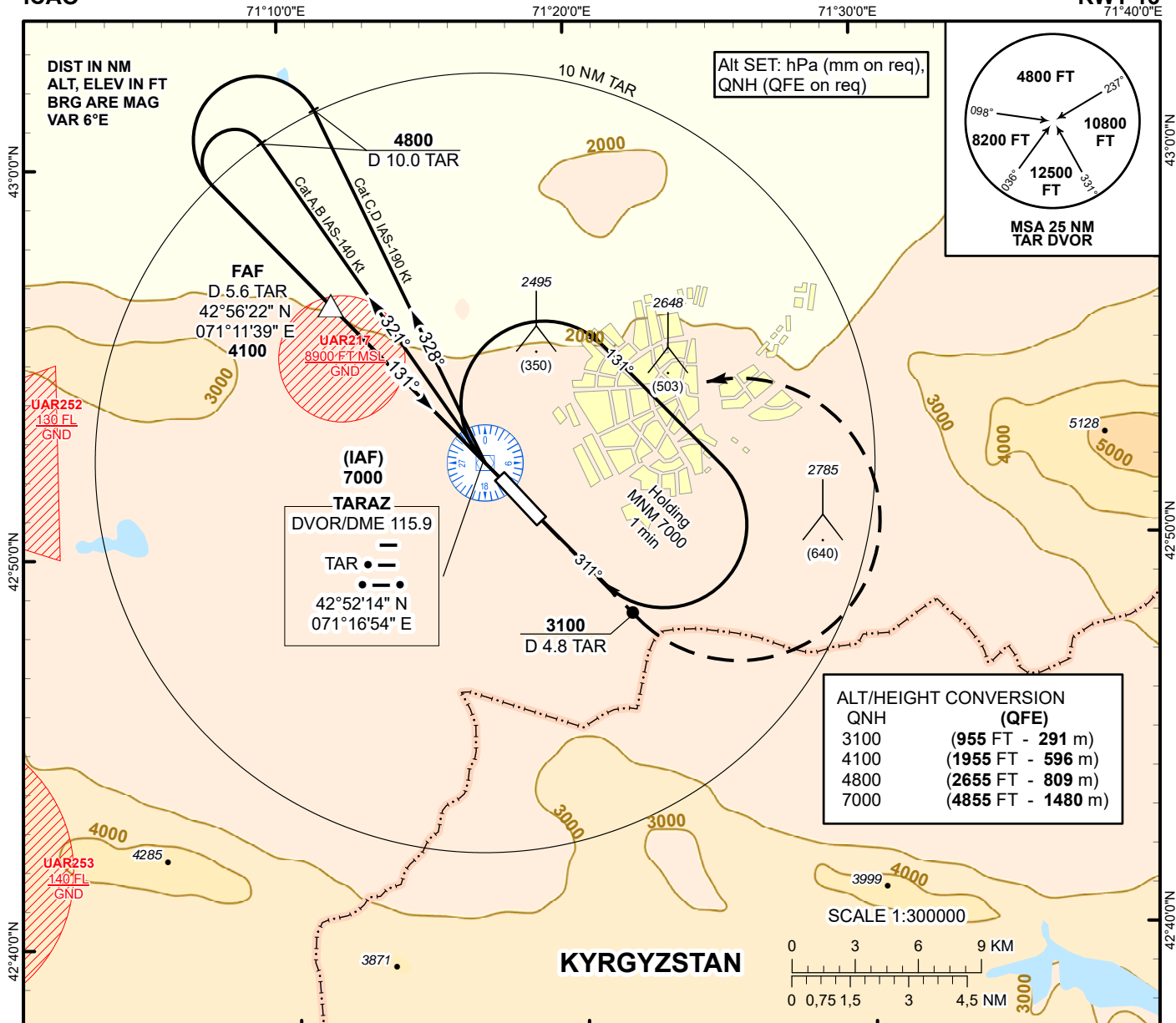


**INSTRUMENT APPROACH
CHART
ICAO**

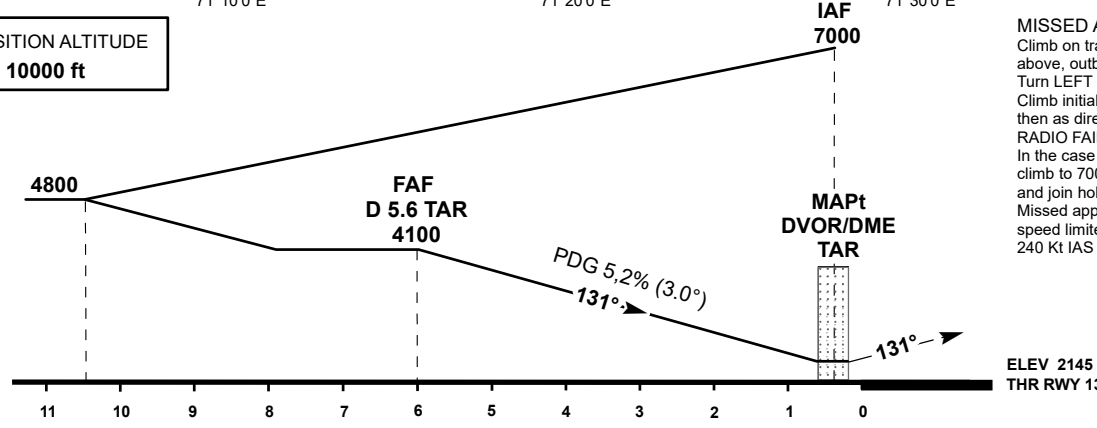
AERODROME ELEV **2190 FT**
HEIGHTS RELATED TO
THR 13 ELEV **2145 FT**

TOWER 122.1

**TARAZ
VOR/DME
RWY 13**



**TRANSITION ALTITUDE
10000 ft**



MISSED APPROACH
Climb on track 131° to 3100 or above, outbound to 4.8 NM TAR. Turn LEFT to TAR. Climb initially to 4800, then as directed.

RADIO FAILURE:
In the case of RCF climb to 7000 to TAR and join holding pattern. Missed approach turn speed limited to 240 Kt IAS maximum.

Aircraft Category	A	B	C	D	DIST to THR	NM	6.0	5.0	4.0	3.0	2.0	1.0
Straight-in Approach OCA/H					DME TAR	NM	5.6	4.6	3.6	2.6	1.6	0.6
					ALTITUDE	FT	4100	3786	3468	3149	2831	2512
				HEIGHT	FT	1955	1641	1323	1004	686	367	
Aerodrome Operating Minima MDH ft x RVR(CMV)					GS	Kt	80	100	120	140	160	180
					Desc Rate(5.2%)	ft/min	420	530	640	740	850	960
					FAF-MAPt (5.6 NM)	min:sec	4:17	3:25	2:51	2:26	2:08	1:54

Change: UAD34 del., renumbered.

TARAZ (UADD)
VOR/DME

AERONAUTICAL DATA TABULATION

VOR approach to RWY13 from TAR DVOR/DME	
Fix/point	Coordinates
TRZ DVOR/DME (IAF)	42° 52' 14.0"N 071° 16' 54.1"E
D5.6 TAR (FAF)	42° 56' 22.0"N 071° 11' 39.2"E
THR RWY13	42° 51' 57.40"N 071° 17' 15.14"E
Final approach descent angle is 3.0°	