

STANDARD DEPARTURE
CHART - INSTRUMENT
(SID) - ICAO

TRANSITION ALTITUDE
10000 ft

TARAZ TOWER
122.1

TARAZ
RWY 13

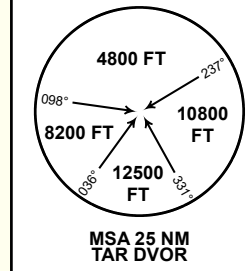
ARBOL 2L, ANESA 2L

71°0'E

71°30'E

DIST IN NM
ALT, ELEV IN FT
BRG ARE MAG
VAR 6°E

ALT/HEIGHT CONVERSION
QNH (QFE)
3100 (955 - 291m)



ARBOL
43°30'55" N
070°51'37" E
TAR
R328.9°/D42.9
FL120

WARNING:
Proceeding ANESA - LEFT turn via TAR.

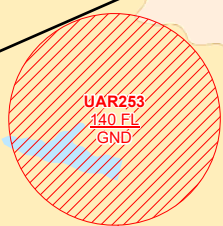
ANNOTATION:
DEPARTURE TURN SPEED
LIMITED TO 230 KT
IAS MAXIMUM

WARNING:
PDG 4,2%.

43°30'N

43°30'N

TARAZ
DVOR/DME 115.9
TAR
42°52'14" N
071°16'54" E
CH_106X
2200 FT



ANESA
42°40'06" N
070°36'54" E
TAR
R242.2°/D31.9
9000

3000

2495

2648

2785

5128

3960

4298

4049

4285

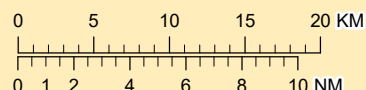
3871

3999

4551

KYRGYZSTAN

SCALE 1:500000



CHANGE: Add DME CH.

71°0'E

71°30'E

STANDARD DEPARTURE ROUTES – INSTRUMENT (SID) TARAZ RWY 13

ARBOL 2L

After take-off climb on track 131° to 3100 FT or above. At 6.5 NM TAR, turn LEFT on track 289° until intercept R329° TAR, then proceed on track 329° to ARBOL (R328.9° D42.9NM TAR).
Cross ARBOL at FL120 or above.

ANESA 2L

After take-off climb on track 131° to 3100 FT or above. At 6.5 NM TAR, turn LEFT to TAR. After passing TAR proceed on track 242° to ANESA (R242.2° D31.9NM TAR).
Cross ANESA at 9000 FT or above.