

**STANDARD DEPARTURE**  
**CHART - INSTRUMENT**  
**(SID) - ICAO**

TRANSITION ALTITUDE  
**10000 ft**

TARAZ TOWER  
**122.1**

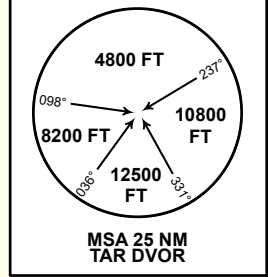
NASIP 2L, GERPU 2L,  
DODOL 2L

**TARAZ**  
**RWY 13**

71°0'E

DIST IN NM  
ALT, ELEV IN FT  
BRG ARE MAG  
VAR 6°E

ALT/HEIGHT CONVERSION  
QNH (QFE)  
3100 (955 - 291m)



**1 WARNING:**  
Flying by NASIP 2L, GERPU 2L - LEFT turn via TAR at 9000 or above  
Flying by DODOL 2L - LEFT turn via TAR at 10000 or above

ANNOTATION:  
DEPARTURE TURN SPEED  
LIMITED TO 230 KT  
IAS MAXIMUM

**TARAZ**  
DVOR/DME 115.9  
TAR  
42°52'14" N  
071°16'54" E  
CH\_106X  
9000 or above\*  
2200 FT

**NASIP**  
43°03'47" N  
071°53'32" E  
TAR  
R060.8°/D29.3  
FL120

**GERPU**  
42°57'39" N  
071°49'51" E  
TAR  
R071.5°/D24.8  
FL120

**DODOL**  
42°35'36" N  
071°26'17" E  
TAR  
R151.7°/D18.0  
FL170

**UAR285**  
6900 FT MSL  
GND

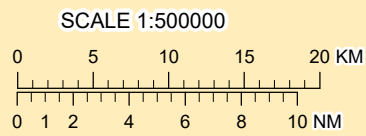
**UAR219**  
8400 FT MSL  
GND

**UAR217**  
8900 FT MSL  
GND

**UAR252**  
130 FL  
GND

**UAR253**  
140 FL  
GND

**KYRGYZSTAN**



CHANGE: Add DME CH.

**STANDARD DEPARTURE ROUTES – INSTRUMENT (SID) TARAZ RWY 13**

**NASIP 2L**

After take-off climb on track 131° to 3100 FT or above. At 6.5 NM TAR, turn LEFT on track 311° until intercept R041° TAR, after intercept R041° TAR turn LEFT to TAR climbing to 9000 FT or above(\*), then proceed on track 061° to NASIP (R060.8° D29.3 NM TAR).

Cross NASIP at FL120 or above.

**\*Remark:** If unable to reach 9000 FT until TAR, continue to reach 9000 FT over TAR.

**GERPU 2L**

After take-off climb on track 131° to 3100 FT or above. At 6.5 NM TAR, turn LEFT on track 311° until intercept R041° TAR, after intercept R041° TAR turn LEFT to TAR climbing to 9000 FT or above(\*), then proceed on track 072° to GERPU (R071.5° D24.8 NM TAR).

Cross GERPU at FL120 or above.

**\*Remark:** If unable to reach 9000 FT until TAR, continue to reach 9000 FT over TAR.

**DODOL 2L**

After take-off climb on track 131° to 3100 FT or above. At 6.5 NM TAR, turn LEFT on track 311° until intercept R041° TAR, after intercept R041° TAR turn LEFT to TAR climbing to 10000 FT or above(\*), then proceed on track 152° to DODOL (R151.7° D18.0 NM TAR).

Cross DODOL at FL170 or above.

**\*Remark:** If unable to reach 10000 FT until TAR, continue to reach 10000 FT over TAR.