

STANDARD DEPARTURE
CHART - INSTRUMENT
(SID) - ICAO

TRANSITION ALTITUDE
10000 ft

TARAZ TOWER
122.1

TARAZ
RWY 31

ARBOL 2M, ANESA 2M

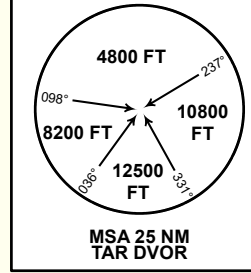
71°0'E

71°30'E

DIST IN NM
ALT, ELEV IN FT
BRG ARE MAG
VAR 6°E

ALT/HEIGHT CONVERSION
QNH (QFE)
3400 (1214 - 370m)

ARBOL
43°30'55" N
070°51'37" E
TAR
R328.9°/D42.9
FL120



WARNING:
Proceeding ANESA - RIGHT turn via TAR.

ANNOTATION:
DEPARTURE TURN SPEED
LIMITED TO 240 KT
IAS MAXIMUM

ARBOL 2M
244

329°

329°

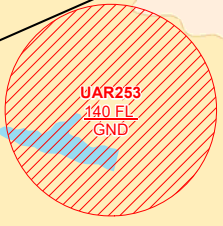
317°

ANESA 2M
232

242°

TARAZ
DVOR/DME 115.9
TAR
42°52'14" N
071°16'54" E
CH_106X
2200 FT

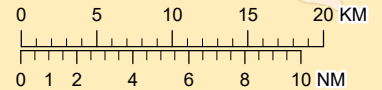
UAR217
8900 FT MSL
GND



ANESA
42°40'06" N
070°36'54" E
TAR
R242.2°/D31.9
9000

KYRGYZSTAN

SCALE 1:500000



CHANGE: Add DME CH.

STANDARD DEPARTURE ROUTES – INSTRUMENT (SID) TARAZ RWY 31

ANESA 2M

After take-off climb on track 311° to 3400 FT or above. At 6.0 NM TAR, turn RIGHT to TAR.
After passing TAR proceed on track 242° to ANESA (R242.2° D31.9 NM TAR).
Cross ANESA at 9000 FT or above.

ARBOL 2M

After take-off climb on track 311° to 3400 FT or above. At 6.0 NM TAR, turn RIGHT on track 359°, until intercept R329° TAR, then proceed on track 329° to ARBOL (R328.9° D42.9 NM TAR).
Cross ARBOL at FL120 or above.