

STANDARD DEPARTURE
CHART - INSTRUMENT
(SID) - ICAO

TRANSITION ALTITUDE
10000 ft

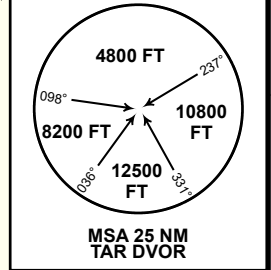
TARAZ TOWER
122.1

NASIP 2M, GERPU 2M,
DODOL 2M

TARAZ
RWY 31

DIST IN NM
ALT, ELEV IN FT
BRG ARE MAG
VAR 6°E

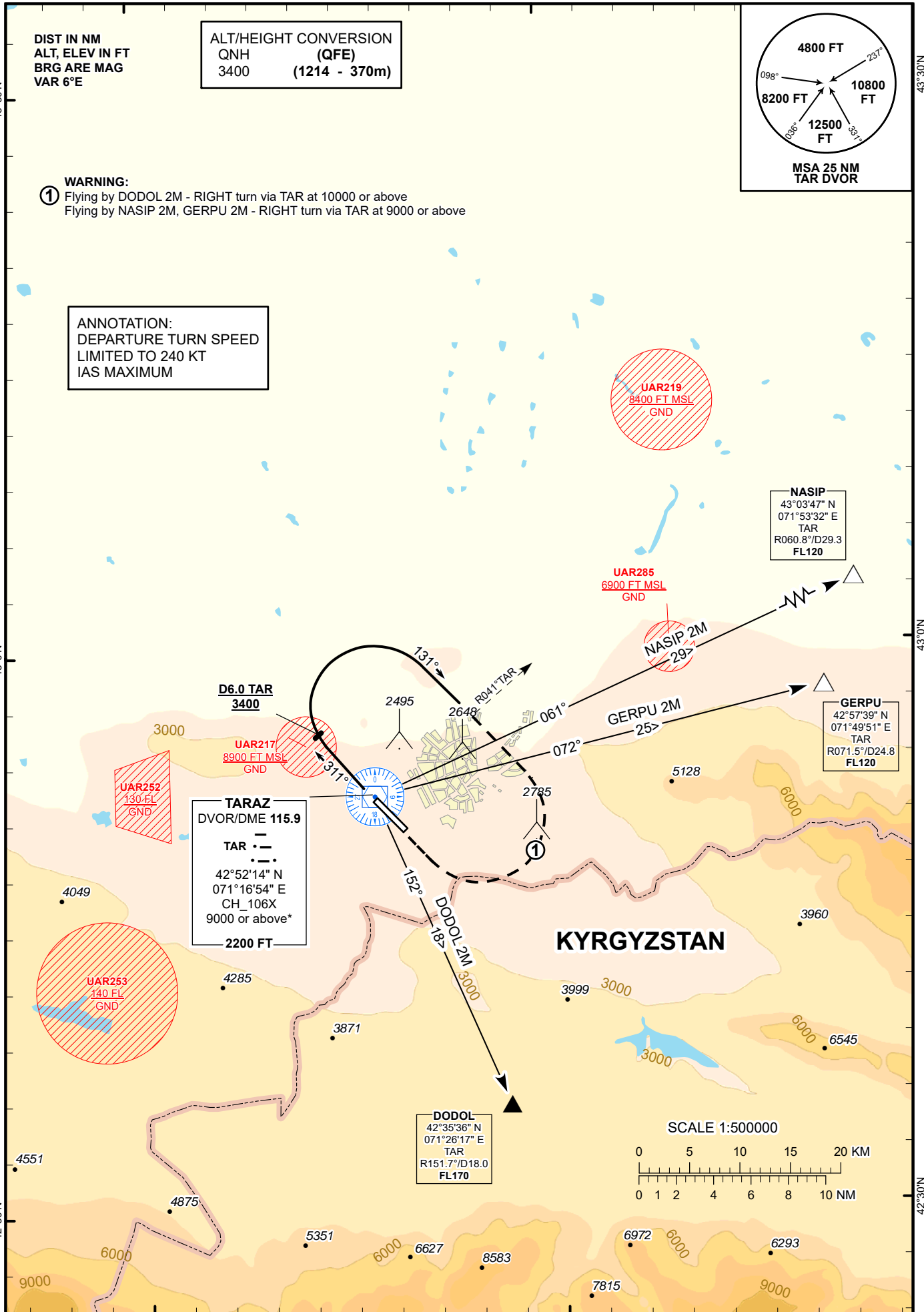
ALT/HEIGHT CONVERSION
QNH (QFE)
3400 (1214 - 370m)



WARNING:
① Flying by DODOL 2M - RIGHT turn via TAR at 10000 or above
Flying by NASIP 2M, GERPU 2M - RIGHT turn via TAR at 9000 or above

ANNOTATION:
DEPARTURE TURN SPEED
LIMITED TO 240 KT
IAS MAXIMUM

CHANGE: Add DME CH.

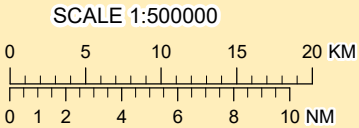


TARAZ
DVOR/DME 115.9
TAR
42°52'14" N
071°16'54" E
CH_106X
9000 or above*
2200 FT

DODOL
42°35'36" N
071°26'17" E
TAR
R151.7°/D18.0
FL170

NASIP
43°03'47" N
071°53'32" E
TAR
R060.8°/D29.3
FL120

GERPU
42°57'39" N
071°49'51" E
TAR
R071.5°/D24.8
FL120



STANDARD DEPARTURE ROUTES – INSTRUMENT (SID) TARAZ RWY 31

NASIP 2M

After take-off climb on track 311° to 3400 FT or above. At 6.0 NM TAR, turn RIGHT on track 131° until intercept R041° TAR, after intercept R041° TAR turn RIGHT to TAR climbing to 9000 FT or above(*), then proceed on track 061° to NASIP (R060.8° D29.3 NM TAR).

Cross NASIP at FL120 or above.

***Remark:** If unable to reach 9000 FT until TAR, continue to reach 9000 FT over TAR.

GERPU 2M

After take-off climb on track 311° to 3400 FT or above. At 6.0 NM TAR, turn RIGHT on track 131° until intercept R041° TAR, after intercept R041° TAR turn RIGHT to TAR climbing to 9000 FT or above(*), then proceed on track 072° to GERPU (R071.5° D24.8 NM TAR).

Cross GERPU at FL120 or above.

***Remark:** If unable to reach 9000 FT until TAR, continue to reach 9000 FT over TAR.

DODOL 2M

After take-off climb on track 311° to 3400 FT or above. At 6.0 NM TAR, turn RIGHT on track 131° until intercept R041° TAR, after intercept R041° TAR turn RIGHT to TAR climbing to 10000 FT or above(*), then proceed on track 152° to DODOL (R151.7° D18.0 NM TAR).

Cross DODOL at FL170 or above.

***Remark:** If unable to reach 10000 FT until TAR, continue to reach 10000 FT over TAR.