

STANDARD ARRIVAL  
CHART - INSTRUMENT  
(STAR) - ICAO

TARAZ TOWER  
122.1

TRANSITION ALTITUDE  
10000 ft

ARBOL 2J, NASIP 2J,  
GERPU 2J, DODOL 2J,  
ANESA 2J

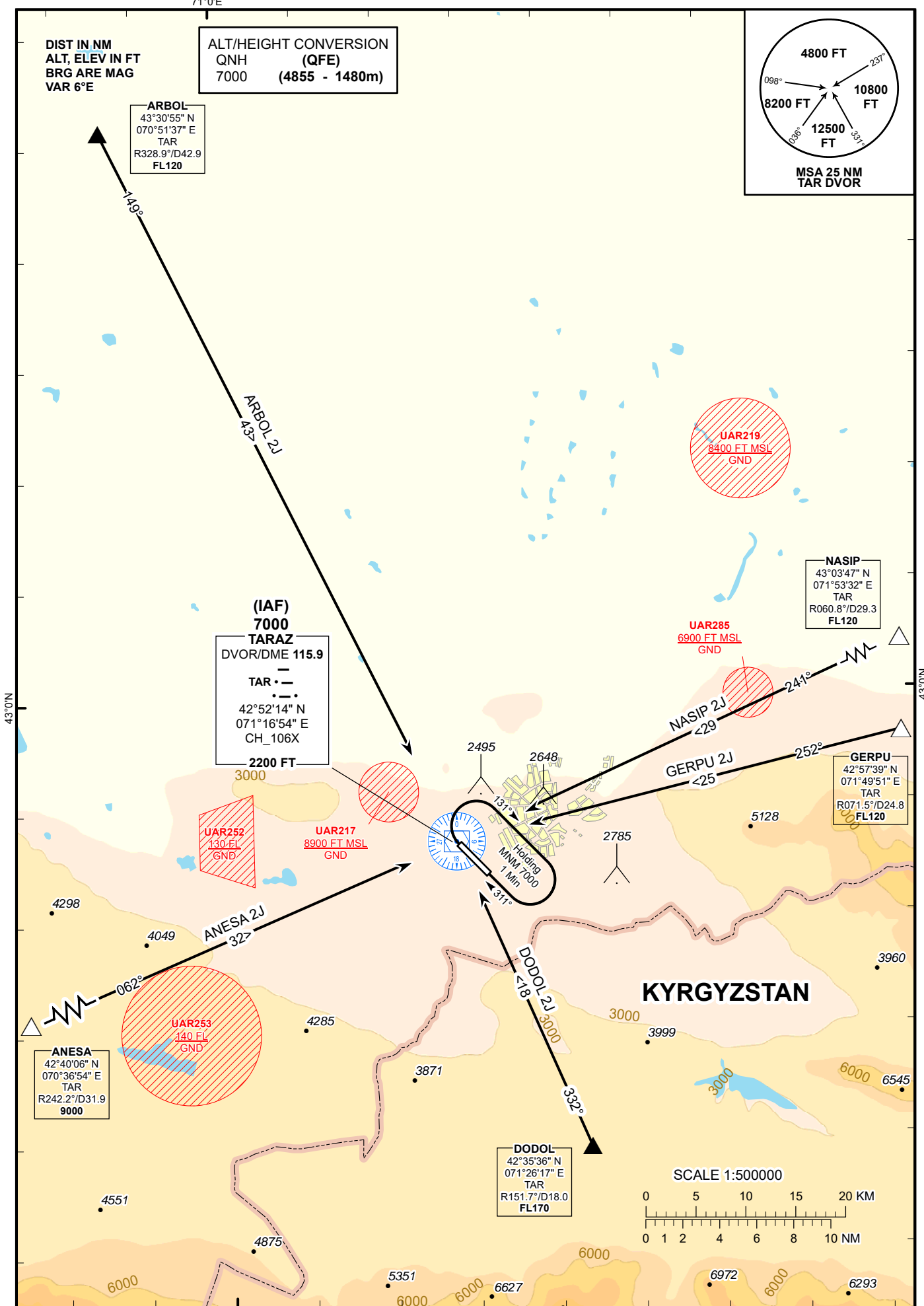
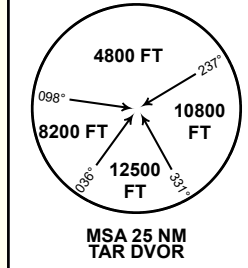
TARAZ  
RWY 13

71°0'E

DIST IN NM  
ALT, ELEV IN FT  
BRG ARE MAG  
VAR 6°E

ALT/HEIGHT CONVERSION  
QNH (QFE)  
7000 (4855 - 1480m)

ARBOL  
43°30'55" N  
070°51'37" E  
TAR  
R328.9°/D42.9  
FL120



(IAF)  
7000  
TARAZ  
DVOR/DME 115.9  
TAR  
42°52'14" N  
071°16'54" E  
CH\_106X  
2200 FT  
3000

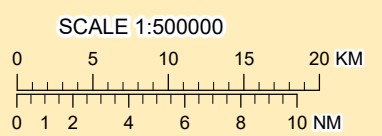
NASIP  
43°03'47" N  
071°53'32" E  
TAR  
R060.8°/D29.3  
FL120

GERPU  
42°57'39" N  
071°49'51" E  
TAR  
R071.5°/D24.8  
FL120

ANESA  
42°40'06" N  
070°36'54" E  
TAR  
R242.2°/D31.9  
9000

DODOL  
42°35'36" N  
071°26'17" E  
TAR  
R151.7°/D18.0  
FL170

KYRGYZSTAN



CHANGE: Add DME CH.

<b>STANDARD ARRIVAL ROUTES – INSTRUMENT (STAR) TARAZ RWY 13</b>
<b>NASIP 2J</b> After crossing NASIP (R060.8° D29.3 NM TAR), proceed on track 241° to TAR. Cross NASIP at FL 120 or above.
<b>GERPU 2J</b> After crossing GERPU (R071.5° D24.8 NM TAR), proceed on track 252° to TAR. Cross GERPU at FL 120 or above.
<b>DODOL 2J</b> After crossing DODOL (R151.7° D18.0 NM TAR), proceed on track 332° to TAR. Cross DODOL at FL 170 or above.
<b>ANESA 2J</b> After crossing ANESA (R242.2° D31.9 NM TAR), proceed on track 062° to TAR. Cross ANESA at 9000 FT or above.
<b>ARBOL 2J</b> After crossing ARBOL (R328.9° D42.9 NM TAR), proceed on track 149° to TAR. Cross ARBOL at FL 120 or above.