

STANDARD ARRIVAL
CHART - INSTRUMENT
(STAR) - ICAO

TARAZ TOWER
122.1

TRANSITION ALTITUDE
10000 ft

ARBOL 2K, NASIP 2K, GERPU 2K,
DODOL 2K, ANESA 2K

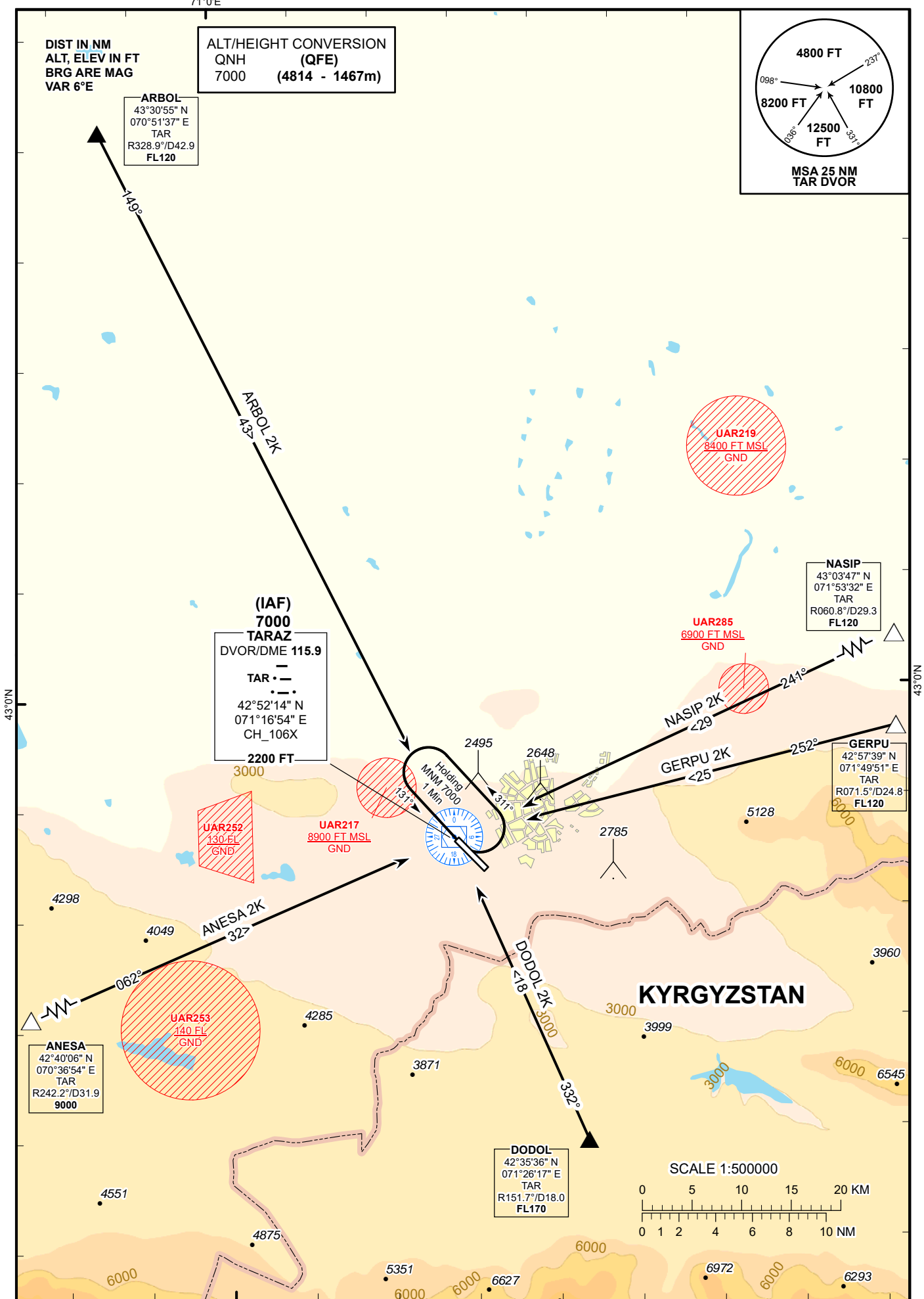
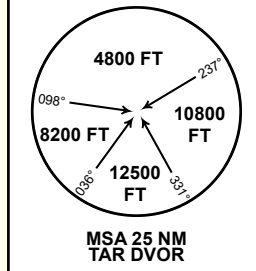
TARAZ
RWY 31

71°0'E

DIST IN NM
ALT, ELEV IN FT
BRG ARE MAG
VAR 6°E

ALT/HEIGHT CONVERSION
QNH (QFE)
7000 (4814 - 1467m)

ARBOL
43°30'55" N
070°51'37" E
TAR
R328.9°/D42.9
FL120



(IAF)
7000
TARAZ
DVOR/DME 115.9
TAR
42°52'14" N
071°16'54" E
CH_106X
2200 FT
3000

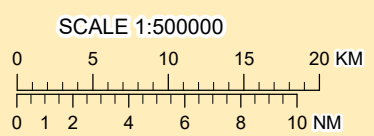
NASIP
43°03'47" N
071°53'32" E
TAR
R060.8°/D29.3
FL120

GERPU
42°57'39" N
071°49'51" E
TAR
R071.5°/D24.8
FL120

ANESA
42°40'06" N
070°36'54" E
TAR
R242.2°/D31.9
9000

DODOL
42°35'36" N
071°26'17" E
TAR
R151.7°/D18.0
FL170

KYRGYZSTAN



CHANGE: Add DME CH.

STANDARD ARRIVAL ROUTES – INSTRUMENT (STAR) TARAZ RWY 31
NASIP 2K After crossing NASIP (R060.8° D29.3 NM TAR), proceed on track 241° to TAR. Cross NASIP at FL 120 or above.
GERPU 2K After crossing GERPU (R071.5° D24.8 NM TAR), proceed on track 252° to TAR. Cross GERPU at FL 120 or above.
DODOL 2K After crossing DODOL (R151.7° D18.0 NM TAR), proceed on track 332° to TAR. Cross DODOL at FL 170 or above.
ANESA 2K After crossing ANESA (R242.2° D31.9 NM TAR), proceed on track 062° to TAR. Cross ANESA at 9000 FT or above.
ARBOL 2K After crossing ARBOL (R328.9° D42.9 NM TAR), proceed on track 149° to TAR. Cross ARBOL at FL 120 or above.